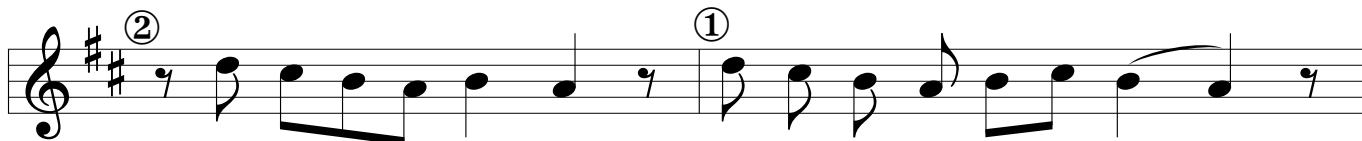




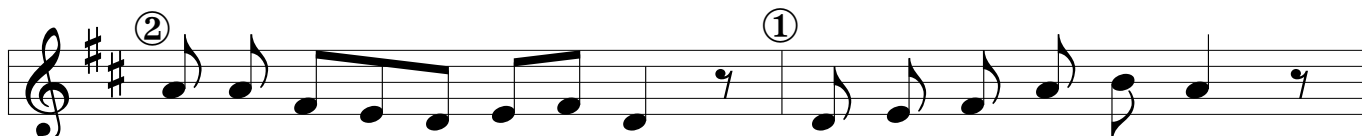
Gló - ri - a in ex - cël - sis De - o.



Et in tér - ra pax ho - mí - ni - bus bo - næ vo - lun - tá - tis.



Lau - dá - mus te. Be - ne - dí - ci - mus - Te.



Ad - o - rá - mus - Te. Glo - ri - fi - cá - mus Te.



Grá - ti - as á - gi - mus - Ti - bi próp - ter má - gnam gló - ri - am tu - am.



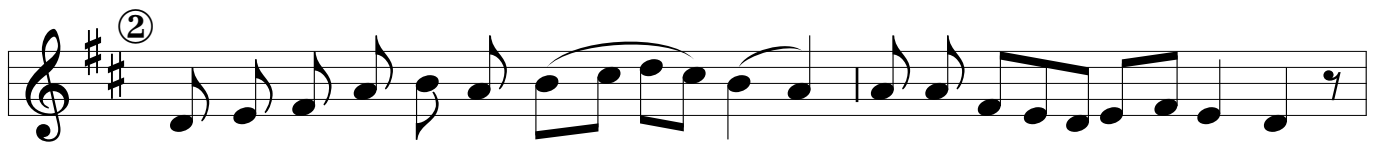
Dó - mi - ne Dé - us, Rex cœ - lé - stis, Dé - us - Pa - ter - om - ní - po - tens.



Dó - mi - ne, Fí - li u - ni - gé - ni - te, Jé - su - Chrí - ste.



Dó - mi - ne Dé - us, Á - gnus Dé - i, Fí - li - us - Pá - tris.



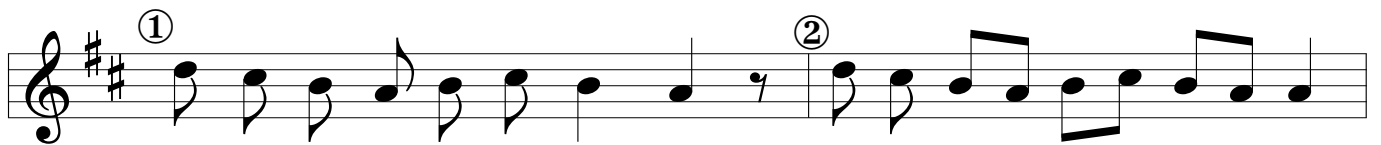
Qui tól-lis pec-cá-ta mún—— di,—— mi-se-ré—— re—— nó-bis.



Qui tól-lis pec-cá-ta mún-di, sú-sci-pe de-pre-ca-ti-ó-nem—— nó—— stram;—



qui sé-des ad délix-te-ram Pá-tris, mi-se-ré-re nó-bis.



Quó-ni-am Tu só-lus Sánc-tus, Tu só-lus—— Dó—— mi—— nus,



Tu só-lus Al—— tís—— sí-mus,—— Jé—— su—— Chrí-ste:



cum Sánc-to—— Spí—— ri-tu, in gló-ri-a Dé-i Pá—— tris.——



A—— men.——